

\$449,000 - 23 Pickering Close, Sylvan Lake

MLS® #A2204194

\$449,000

4 Bedroom, 3.00 Bathroom, 1,216 sqft
Residential on 0.15 Acres

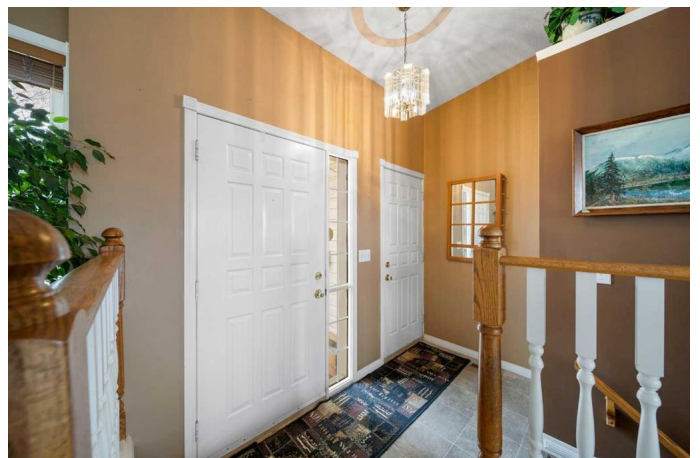
Pierview, Sylvan Lake, Alberta

Rare opportunity to live in a wonderful close! This 4 bdrm 3 bath WALK-OUT bungalow has had many upgrades over the years. Beautiful hardwood flooring greets you on the main flr. The kitchen has tons of cabinet space along with an island. Off the dining room are doors to the east facing deck. There are 3 bdrm up with primary featuring a 3pc bath. Lower level features a large entertainment room with gas fireplace and high end pool table that goes with the home. Additional bdrm, storage and laundry rm complete the basement. There are double doors that lead you out to a patio with interlocking pavers. This well maintained home is close to all amenities in the wonderful Pierview subdivision.

Built in 1992

Essential Information

| | |
|----------------|-------------|
| MLS® # | A2204194 |
| Price | \$449,000 |
| Bedrooms | 4 |
| Bathrooms | 3.00 |
| Full Baths | 3 |
| Square Footage | 1,216 |
| Acres | 0.15 |
| Year Built | 1992 |
| Type | Residential |
| Sub-Type | Detached |
| Style | Bungalow |



Status Active

Community Information

Address 23 Pickering Close
Subdivision Pierview
City Sylvan Lake
County Red Deer County
Province Alberta
Postal Code T4S 1K2

Amenities

Parking Spaces 4
Parking Double Garage Attached, Insulated, Driveway, Garage Door Opener
of Garages 2

Interior

Interior Features Central Vacuum, Kitchen Island, Laminate Counters, No Animal Home, Storage, Vinyl Windows
Appliances Central Air Conditioner, Dishwasher, Electric Stove, Microwave, Refrigerator, Washer/Dryer
Heating Forced Air, Natural Gas
Cooling Central Air
Fireplace Yes
of Fireplaces 1
Fireplaces Basement, Gas, Mantle, Tile
Has Basement Yes
Basement Finished, Full

Exterior

Exterior Features Private Yard
Lot Description Back Yard, Front Yard, Landscaped, Lawn, Level, Private
Roof Asphalt Shingle
Construction Brick, Vinyl Siding
Foundation Poured Concrete

Additional Information

Date Listed March 27th, 2025
Days on Market 8
Zoning R1

Listing Details

Listing Office RE/MAX real estate central alberta

Data is supplied by Pillar 9â,,ç MLSÂ® System. Pillar 9â,,ç is the owner of the copyright in its MLSÂ® System. Data is deemed reliable but is not guaranteed accurate by Pillar 9â,,ç. The trademarks MLSÂ®, Multiple Listing ServiceÂ® and the associated logos are owned by The Canadian Real Estate Association (CREA) and identify the quality of services provided by real estate professionals who are members of CREA. Used under license.