

# \$169,900 - 35 Parlby Crescent, Lacombe

MLS® #A2200270

**\$169,900**

0 Bedroom, 0.00 Bathroom,  
Land on 0.25 Acres

Metcalf Ridge, Lacombe, Alberta

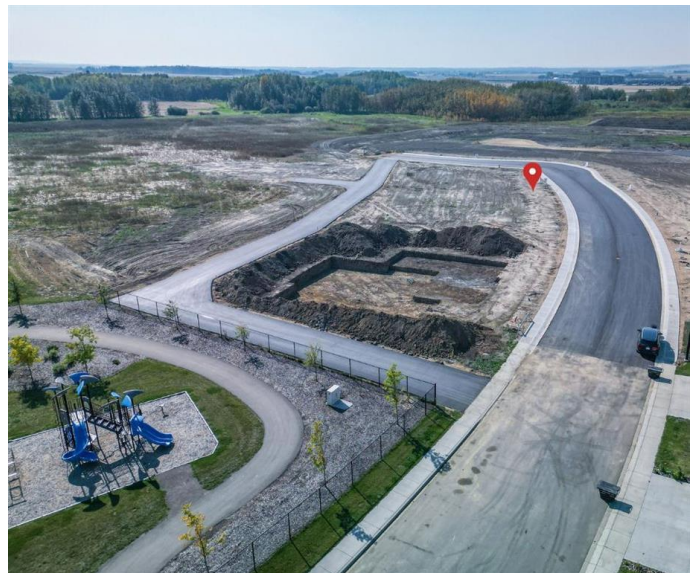
Build your dream home on a 96' X 121' lot in Metcalf Ridge! This fully serviced lot is ready to build on and features a paved back ally! You have the freedom to choose your builder and create a home with ample room for a monster garage plus still have enough room for RV parking. This family-friendly community offers easy access to Highway 12, a large park with walking trails and picnic areas. Whether you're looking for a starter home or an upgrade, Metcalf Ridge lots are available to suit a range of house sizes.

## Essential Information

MLS® #	A2200270
Price	\$169,900
Bathrooms	0.00
Acres	0.25
Type	Land
Sub-Type	Residential Land
Status	Active

## Community Information

Address	35 Parlby Crescent
Subdivision	Metcalf Ridge
City	Lacombe
County	Lacombe
Province	Alberta
Postal Code	T4L 0J9



**Additional Information**

Date Listed	March 7th, 2025
Days on Market	37
Zoning	R1

**Listing Details**

Listing Office	RE/MAX real estate central alberta
----------------	------------------------------------

Data is supplied by Pillar 9â„¸ MLSÂ® System. Pillar 9â„¸ is the owner of the copyright in its MLSÂ® System. Data is deemed reliable but is not guaranteed accurate by Pillar 9â„¸. The trademarks MLSÂ®, Multiple Listing ServiceÂ® and the associated logos are owned by The Canadian Real Estate Association (CREA) and identify the quality of services provided by real estate professionals who are members of CREA. Used under license.