

# \$299,900 - 5020 42 Street, Sylvan Lake

MLS® #A2191504

**\$299,900**

0 Bedroom, 0.00 Bathroom,  
Land on 0.09 Acres

Cottage Area, Sylvan Lake, Alberta

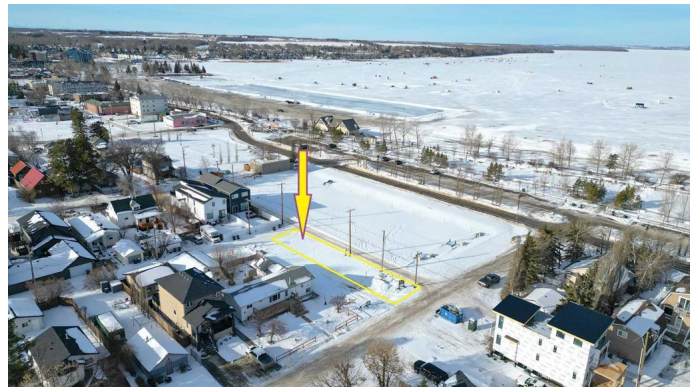
WOW...don't miss this opportunity to build your dream home/cottage just steps from the lake on this 30 x 125 ft. lot. Cottage district lots have become increasingly rare, now is the time to build! This unbeatable location is just off Lakeshore drive near the park, and steps to the lake. You'll love watching the all action and enjoying the sunsets from your deck. With close proximity to restaurants, shopping, the marina, boardwalk-you'll be able to truly enjoy the Sylvan Lake lifestyle. Sylvan has become a 4 seasons destination with countless activities going on all year long. Lot has been subdivided, graded, serviced to property line, and is ready to build on. The side laneway will be paved. No restrictions on time to build, so you can hold it until YOU are ready.

## Essential Information

MLS® #	A2191504
Price	\$299,900
Bathrooms	0.00
Acres	0.09
Type	Land
Sub-Type	Residential Land
Status	Active

## Community Information

Address	5020 42 Street
Subdivision	Cottage Area



City	Sylvan Lake
County	Red Deer County
Province	Alberta
Postal Code	T4S 1C1

### **Amenities**

Is Waterfront	Yes
---------------	-----

### **Exterior**

Lot Description	Back Yard, Cleared, Lake, Front Yard, Near Shopping Center, Level, Rectangular Lot, Waterfront
-----------------	--

### **Additional Information**

Date Listed	January 31st, 2025
Days on Market	64
Zoning	R5

### **Listing Details**

Listing Office	RCR - Royal Carpet Realty Ltd.
----------------	--------------------------------

Data is supplied by Pillar 9â„¢ MLSÂ® System. Pillar 9â„¢ is the owner of the copyright in its MLSÂ® System. Data is deemed reliable but is not guaranteed accurate by Pillar 9â„¢. The trademarks MLSÂ®, Multiple Listing ServiceÂ® and the associated logos are owned by The Canadian Real Estate Association (CREA) and identify the quality of services provided by real estate professionals who are members of CREA. Used under license.