

\$449,900 - 95 Gray Close, Sylvan Lake

MLS® #A2188807

\$449,900

3 Bedroom, 3.00 Bathroom, 952 sqft
Residential on 0.05 Acres

Greyhawk, Sylvan Lake, Alberta

Under construction Edge Homes built bungalow with a 18x18 detached garage & main floor laundry. The perfect home to downsize into, this 3 bedroom 3 bathroom unit is sure to impress your friends and family. Bright open floorplan with 9 ft ceilings and luxury vinyl plank flooring. Relax in the living room and watch the deer & wildlife in the farmers field behind. Entertain in the functional kitchen with centre island eating bar, corner pantry, soft close cabinets, under cabinet lighting, black granite sil sink, pull out garbage & recycling, range hood and stainless appliances. Dining room to entertain your friends, leads to handy back bench with decorative hooks, back door with with full glass/blind insert, back deck with privacy wall. 2 piece powder room for guests. Spoil yourself with this stunning primary bedroom with carpet flooring, huge walk in closet 4 piece ensuite with double sinks, stand up shower with glass door and seat. Basement is complete with family room, 2 more bedrooms one with a massive walk in closet for extra storage, 4pce bathroom. 9 foot ceilings and large windows make this basement perfect for teens or guests. High efficiency furnace, 40 gal high efficiency hot water tank. Front yard is landscaped with front sod, back yard is levelled with black dirt and has 18x18 detached garage. Located in Grayhawk on the west side of Sylvan Lake, with easy access to all town amenities, the lake, golf course, shopping, highway access and surrounded by



GRAYHAWK DUPLEX

LIST OF DRAWINGS

- A01 TITLE PAGE
- A02 FOUNDATION PLAN
- A03 LOWER FLOOR PLAN
- A04 MAIN FLOOR PLAN
- A05 ROOF PLAN
- A06 ELEVATIONS
- A07 ELEVATIONS
- A08 ELEVATIONS
- A09 BUILDING SECTIONS
- A10 BUILDING SECTIONS
- A11 BUILDING SECTIONS
- A12 CNST DTLS
- A13 CNST DTLS / NOTES / LEGENDS

DATE: 2024-03-11		PROJECT NAME: GRAYHAWK DUPLEX		PROJECT NUMBER: EH-2024-18		SCALE:	
SHEET TITLE: TITLE PAGE		DATE: 2024-03-11		SHEET: A01			

NOTE: FINAL BUILDING (SPEC) MAY NOT BE EXACTLY AS SHOWN. THESE DRAWINGS MAY NOT BE USED OR REPRODUCED WITHOUT THE PERMISSION OF EDGE HOMES DESIGN INC.

walking paths and trails. GST included in purchase price with rebate to the builder. 1-2-5-10 New home warranty. Taxes to be assessed.

Built in 2025

Essential Information

MLS® #	A2188807
Price	\$449,900
Bedrooms	3
Bathrooms	3.00
Full Baths	2
Half Baths	1
Square Footage	952
Acres	0.05
Year Built	2025
Type	Residential
Sub-Type	Semi Detached
Style	Side by Side, Bungalow
Status	Active

Community Information

Address	95 Gray Close
Subdivision	Greyhawk
City	Sylvan Lake
County	Red Deer County
Province	Alberta
Postal Code	T4S0W4

Amenities

Parking Spaces	2
Parking	Off Street, Single Garage Detached
# of Garages	1

Interior

Interior Features	Closet Organizers, Kitchen Island, No Animal Home, No Smoking Home, Open Floorplan, Quartz Counters, Pantry
Appliances	Dishwasher, Garage Control(s), Refrigerator, Stove(s)

Heating Forced Air
 Cooling None
 Has Basement Yes
 Basement Finished, Full

Exterior

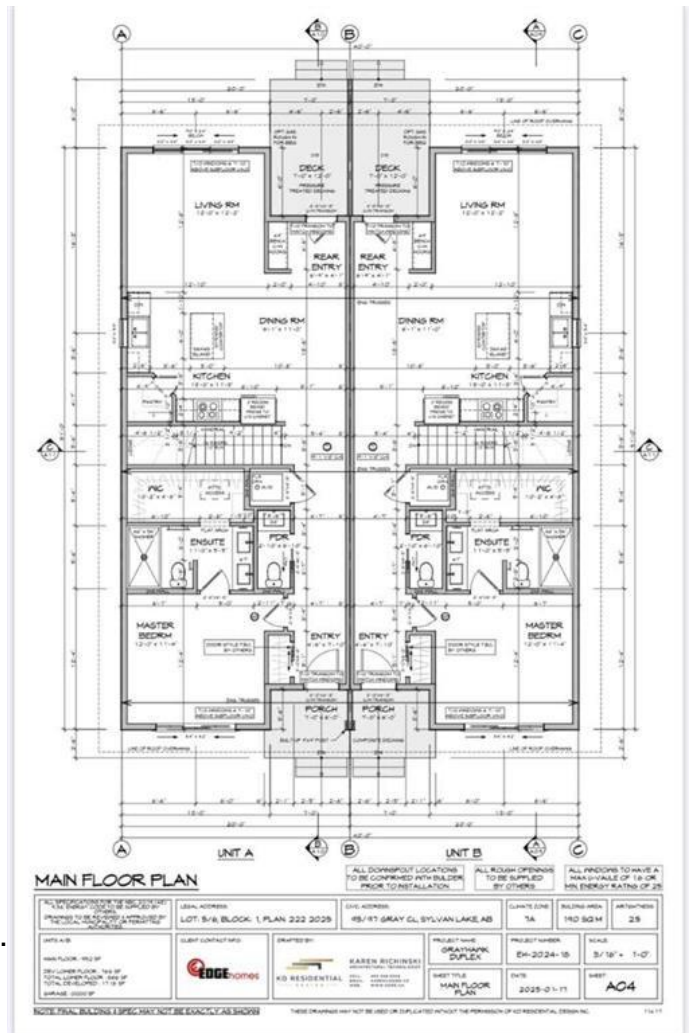
Exterior Features None
 Lot Description Back Lane, Back Yard
 Roof Asphalt Shingle
 Construction Wood Frame
 Foundation Poured Concrete

Additional Information

Date Listed January 19th, 2025
 Days on Market 75
 Zoning R5A

Listing Details

Listing Office RCR - Royal Carpet Realty Ltd.



Data is supplied by Pillar 9a,,ç MLSÂ® System. Pillar 9a,,ç is the owner of the copyright in its MLSÂ® System. Data is deemed reliable but is not guaranteed accurate by Pillar 9a,,ç. The trademarks MLSÂ®, Multiple Listing ServiceÂ® and the associated logos are owned by The Canadian Real Estate Association (CREA) and identify the quality of services provided by real estate professionals who are members of CREA. Used under license.