

# \$1,150,000 - Rr12tpw361 Rr12 Range, Rural Red Deer County

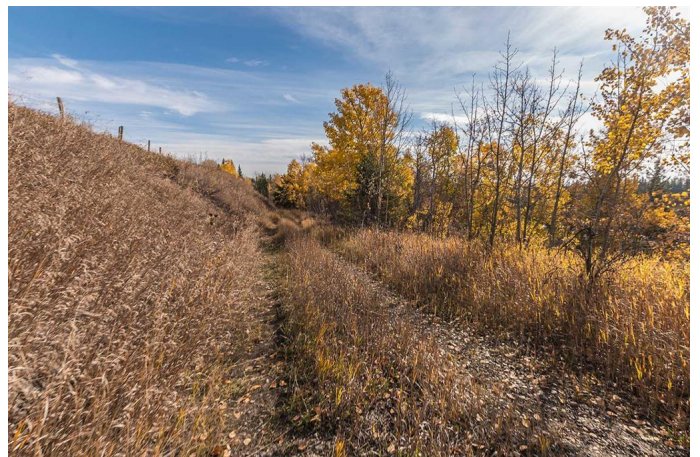
MLS® #A2172760

**\$1,150,000**

0 Bedroom, 0.00 Bathroom,  
Land on 99.00 Acres

NONE, Rural Red Deer County, Alberta

Discover 99 acres of pure serenity on the south bank of the Red Deer River! This exceptional property offers unmatched privacy, making it perfect for your dream home, family camping retreats, or a peaceful vacation getaway. With ample space for any of your desires and direct river access between Innisfail and Gleniffer Lake, this land provides endless possibilities for relaxation and outdoor adventure. Whether you're seeking seclusion or a recreational retreat, this property offers the ultimate in privacy and natural beauty.



## Essential Information

MLS® #	A2172760
Price	\$1,150,000
Bathrooms	0.00
Acres	99.00
Type	Land
Sub-Type	Commercial Land
Status	Active

## Community Information

Address	Rr12tpw361 Rr12 Range
Subdivision	NONE
City	Rural Red Deer County
County	Red Deer County
Province	Alberta

Postal Code T4G0M9

### **Additional Information**

Date Listed October 23rd, 2024

Days on Market 164

Zoning AG

### **Listing Details**

Listing Office Century 21 Maximum

Data is supplied by Pillar 9â„¸ MLSÂ® System. Pillar 9â„¸ is the owner of the copyright in its MLSÂ® System. Data is deemed reliable but is not guaranteed accurate by Pillar 9â„¸. The trademarks MLSÂ®, Multiple Listing ServiceÂ® and the associated logos are owned by The Canadian Real Estate Association (CREA) and identify the quality of services provided by real estate professionals who are members of CREA. Used under license.